

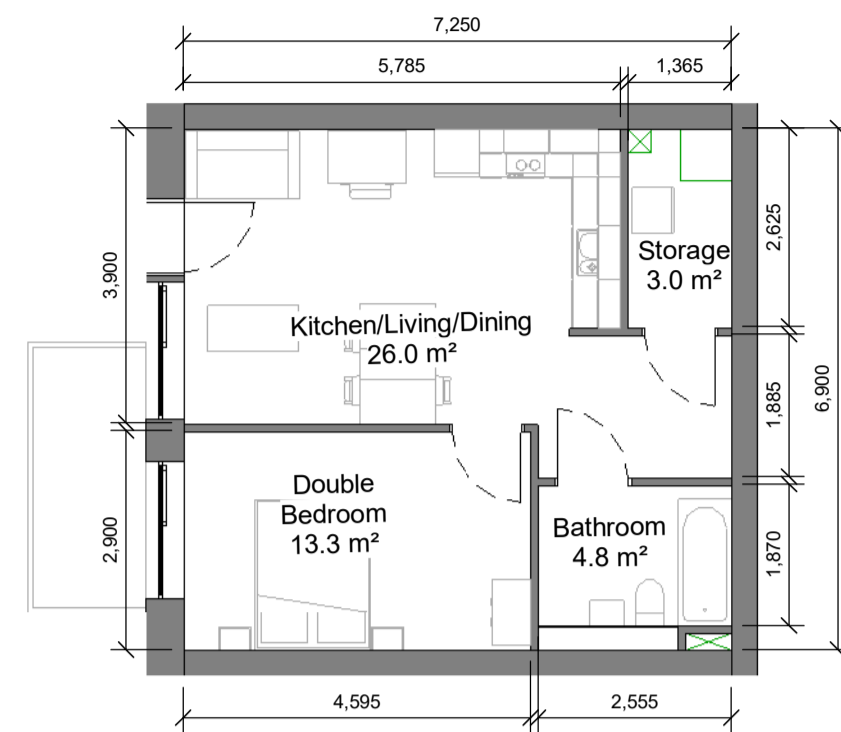
1B2P Type 2A
1: 100



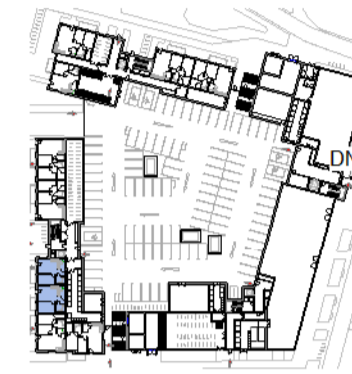
L02-L05
1: 2000



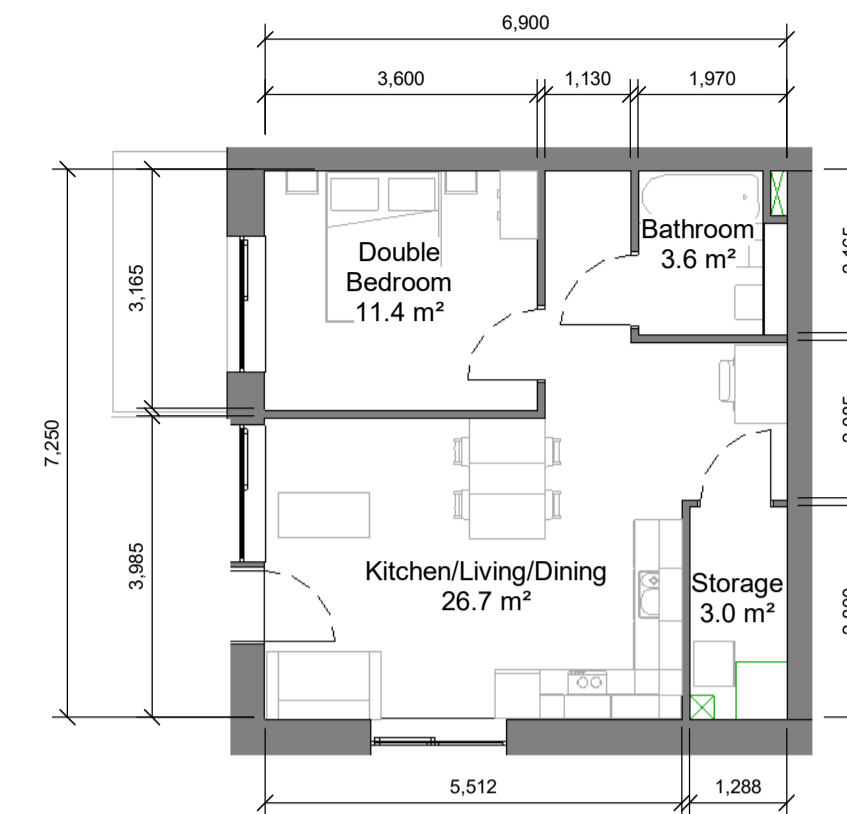
L01
1: 2000



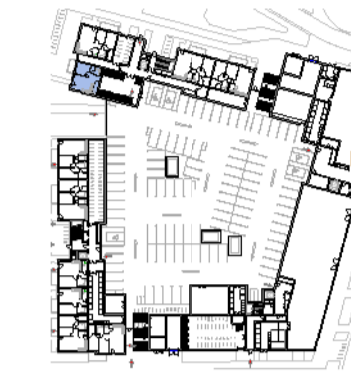
1B2P Type 2B
1: 100



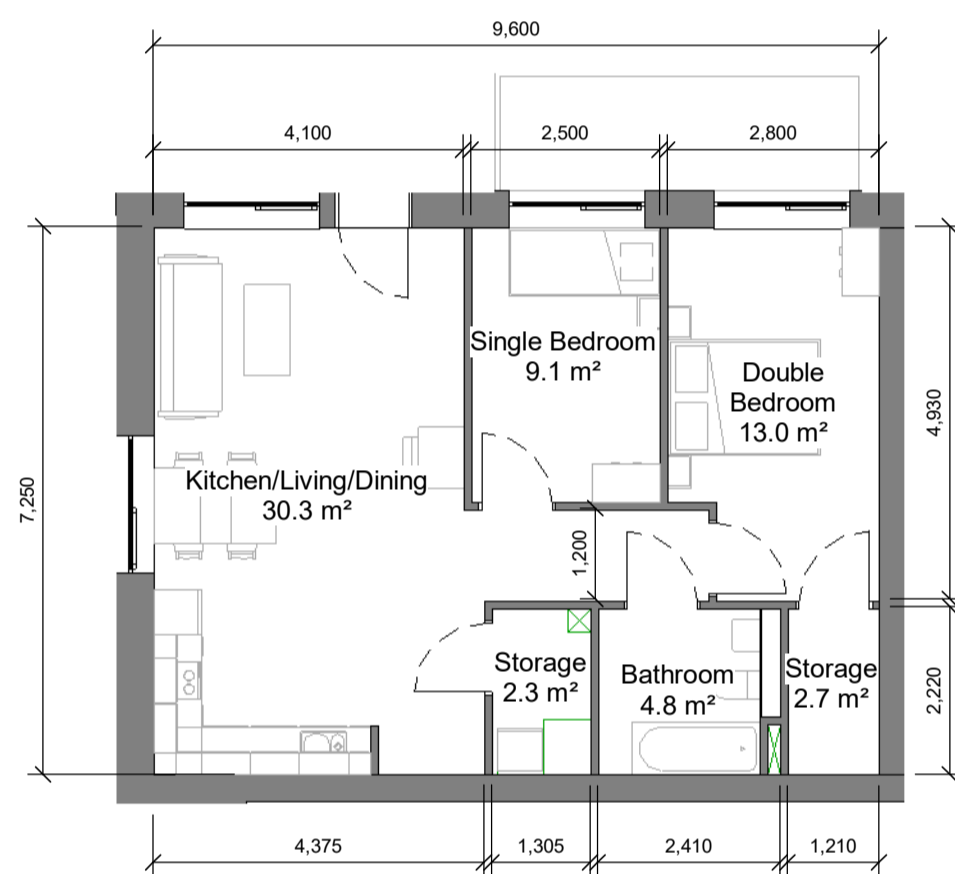
B7_L00
1: 2000



1B2P Type 2F
1: 100



B7_L00
1: 2000



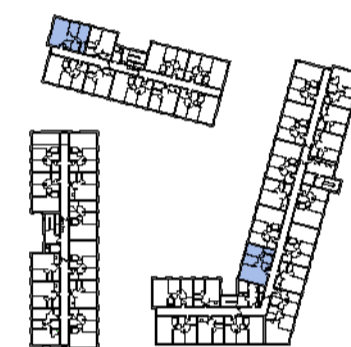
2B3P Type 3A
1: 100



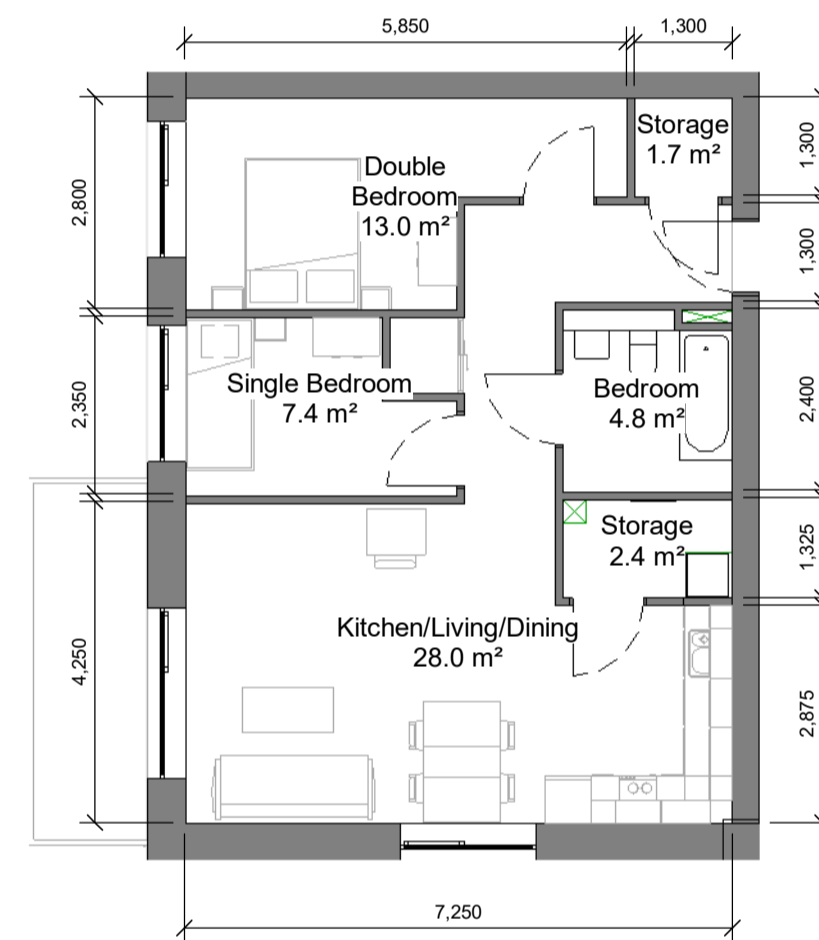
L01
1: 2000



B7_L00
1: 2000



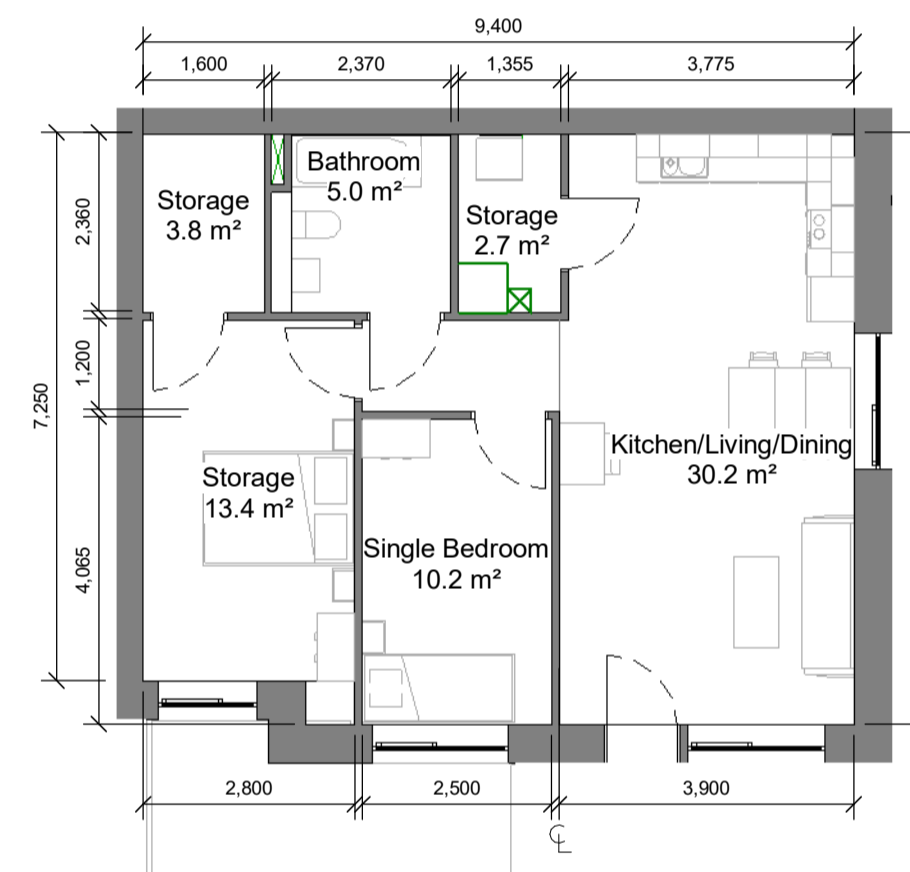
L02-L05
1: 2000



2B3P Type 3B
1: 100



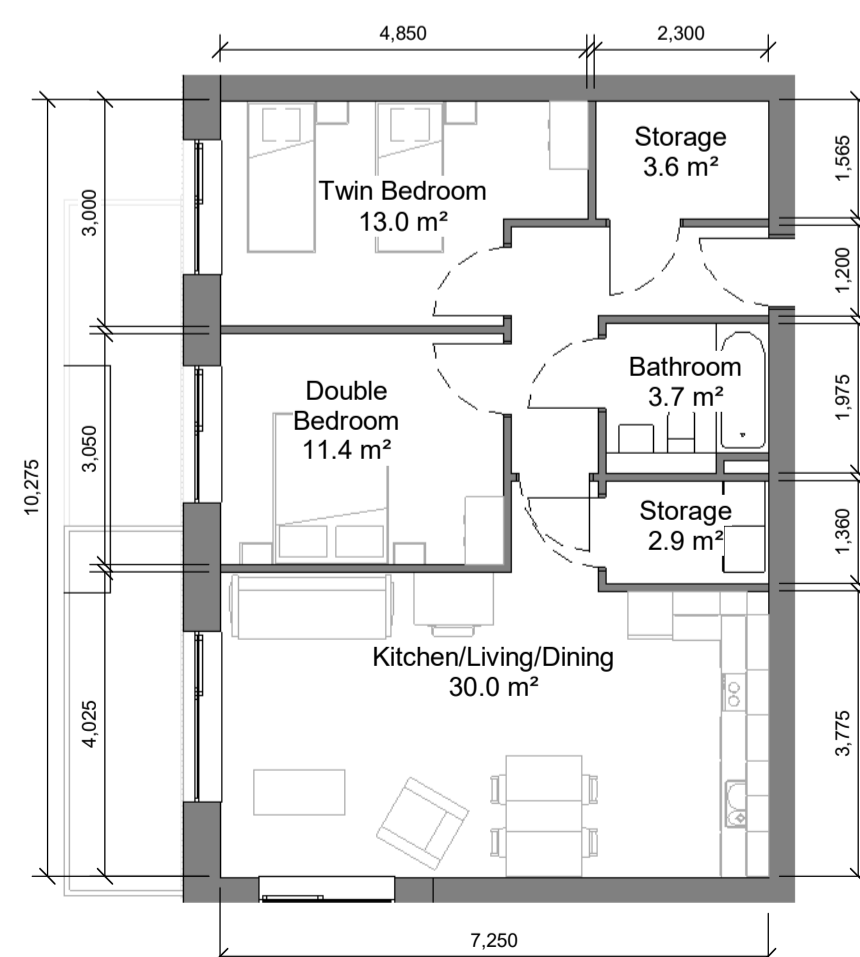
L01-L05
1: 2000



2B3P Type 3C
1: 100



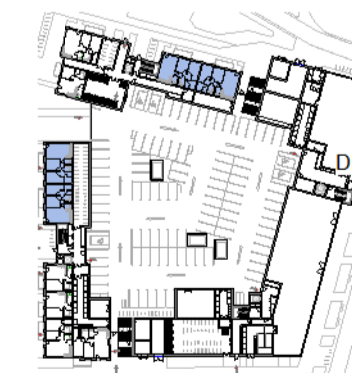
L00
1: 2000



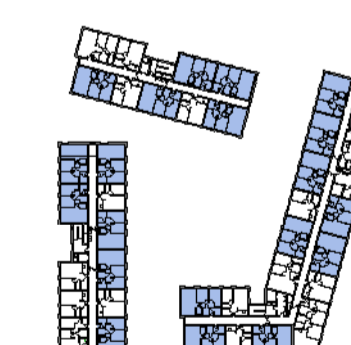
2B4P Type 4B
1: 100



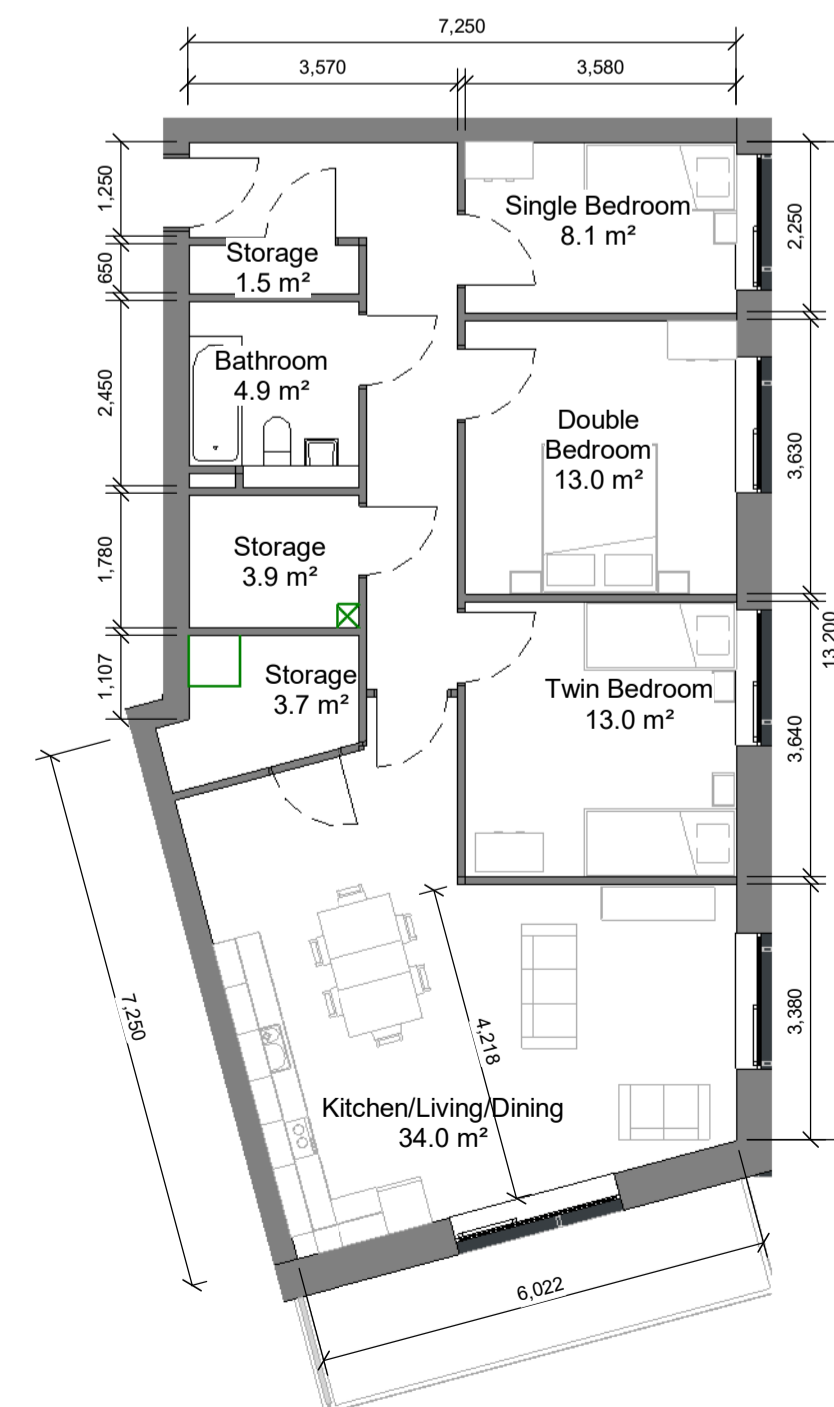
L01
1: 2000



L00
1: 2000



L02-L05
1: 2000

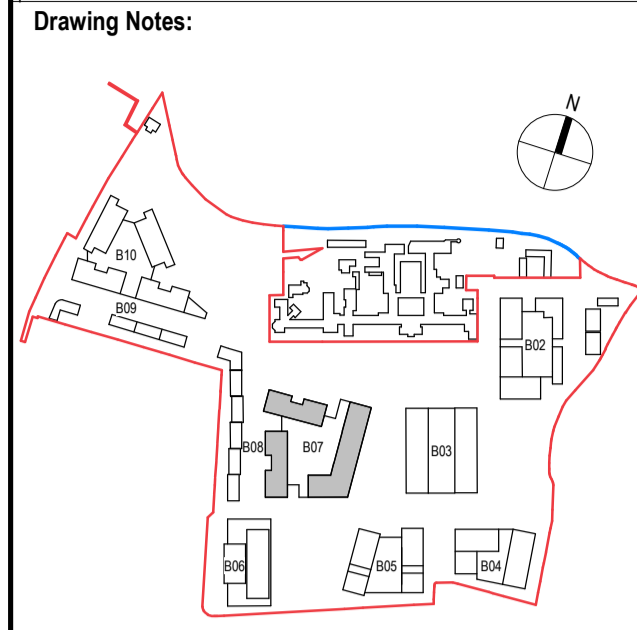


3B5B Type 5B
1: 100



L01-L07
1: 2000

Notes:
- Do not scale from this drawing. Use figured dimensions in all cases.
- Verify dimensions on site and report any discrepancies to the Architect immediately.
- This drawing is to be read in conjunction with the Architect's Specification.
- © This drawing is copyright and may only be reproduced with the Architect's permission.



P3 S-1	Sept 2024	KP	Part 10 Planning Application
Rev.	Date	Drawn	Details of Issue / Revision

Issues & Revisions



Dartry Mills,
Dartry Road
Dublin 6,
D06 Y0E3

T: +353 (0)1 498 7000
W: www.reddyarchitecture.com
E: info@reddyarchitecture.com

Applicant Details:
Dún Laoghaire-Rathdown County Council

Agent Details:
Land Development Agency

Project Details:
**Proposed Part 10 Residential Development,
Dundrum Central Development,
Dundrum Road,
Dublin14**

Drawing Title:
Block 07, Typologies 01

Job No.	Sheet Size:	Scale @A1:
P19-233D	A1_Landscape	As indicated
Issue Date:	Drawn By:	Reviewed By:
Sept 2024	K. Potocka	R. Quinn

Status: **P3** Purpose of Issue: **Part 10 Planning Application**

Project - System - Spatial Zone - Level - Type - Originator - Role - Number	Revision
DCD-02-B07-ZZZ-DR-RAU-AR-1720	P3 S-1